

## Specified Small Motorized Bicycles

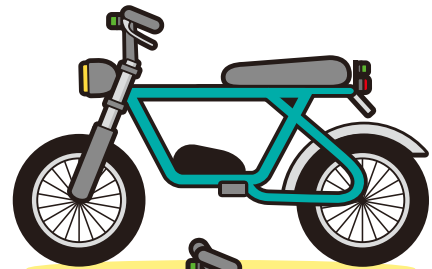
.....  
e.g. Electric Scooters

# Follow traffic rules



\*Image for illustrative purposes only.

Here are some recent models!



Is yours one?  
Check the back of this flyer!

- ✓ Riding under the age of 16 is **prohibited**
- ✓ Obtain **compulsory automobile liability insurance**
- ✓ Attach a **license plate**

- ✓ Wear a **helmet**  
(strongly encouraged but not mandatory)

- ✓ No riding under the influence of alcohol

- ✓ Use turn signals

- ✓ No cell phone use or other distractions while riding

- ✓ Ride on **roadways or bike lanes**, as a general rule

- ✓ Follow **traffic signals and signs**

- ✓ No tandem riding

- ✓ No leaving vehicles unattended on the roadside, etc.

Mimamoriinu  
Mascot promoting  
safety and security



Tokyo  
Metropolitan  
Government  
Website



Metropolitan  
Police  
Department  
Website



TOKYO  
METROPOLITAN  
GOVERNMENT

# Safety Guidelines for Riding Specified Small Motorized Bicycles

Check these out!



## Criteria for Specified Small Motorized Bicycles

- Up to 190cm in length and 60cm in width
- Automatic transmission
- Top speed cannot be adjusted while in motion
- Max speed of no more than 20km/h
- Motor power rating of no higher than 0.6kW
- Equipped with a max speed indicator light

\*Transitional measures in effect until December 22, 2024.

Vehicles that do not meet all of the listed criteria are classified as general motorized bicycles or motor vehicles and are subject to traffic rules according to their vehicle classification.

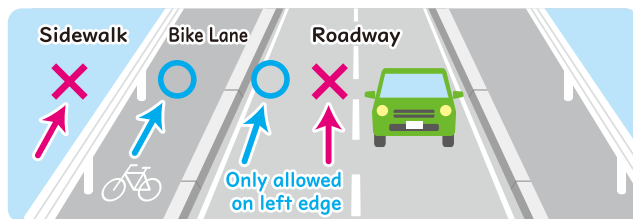
Classification	Age Restriction	License Needed?	Helmet	Speed Limit	Lane Use	Max Speed Indicator Light
General Motorized Bicycles (formerly "Motorized Bicycles")	16+	Yes	Mandatory	30km/h (by law)	Roadways	—
Specified Small Motorized Bicycles	16+	No	Strongly Encouraged	20km/h (max)*	Roadways / Bike Lanes	Solid Green
Exceptional Specified Small Motorized Bicycles	16+	No	Strongly Encouraged	6km/h (max)*	Roadways / Bike Lanes / Designated Sidewalks	Flashing Green

\*Controlled by speed limiting device

Some vehicles can switch between both (not while in motion)

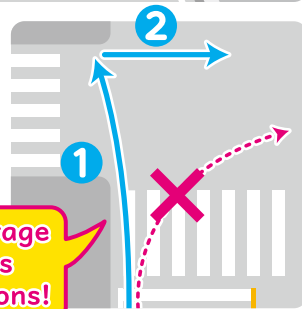
### Ride on roadways and bike lanes

Ride on **roadways (or bike lanes)** in areas where the roadway is distinguished from a sidewalk or pedestrian shoulder.



Always check traffic signals and signs, and follow traffic rules.

Make two-stage right turns at intersections!



### Riding on sidewalks is the exception

Only scooters designated as **exceptional** specified small motorized bicycles may ride on **sidewalks permitting bicycle use**. Pedestrians have right of way on sidewalks.

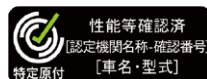
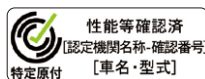
Note:

Excludes sidewalks where the passage of exceptional specified small motorized bicycles is **prohibited** by road signs, etc.



### Ride safe vehicles

Make sure your vehicle is **compliant with the safety standards** of the Road Transport Vehicle Act.  
e.g. Performance certificates



### Traffic Violation Penalties

Riding under the influence of alcohol	Up to 5 years in prison or a fine of up to 1,000,000 yen, etc.
Ignoring a traffic signal	Up to 3 months in prison or a fine of up to 50,000 yen
Obstructing pedestrian traffic	Up to 3 months in prison or a fine of up to 50,000 yen
Riding on a sidewalk*	Up to 3 months in prison or a fine of up to 50,000 yen

\*Excluding cases where the vehicle meets the criteria for an exceptional specified small motorized bicycle AND the sidewalk has a sign indicating bicycle and pedestrian use only.

Published by:

- Citizen Safety Promotion Division, Bureau of Citizens, Culture and Sports, Tokyo Metropolitan Government / TEL:03-5388-3124
- Traffic Administration Division, Traffic Bureau, Metropolitan Police Department / TEL:03-3581-4321

In cooperation with:



Micro-Mobility Promotions Council



Japan Electronic Mobility Promotion Association

Published September 2024