

Overview

Vision for Public Education in Ota

The Fourth Master Plan
for the Promotion of Education in Ota City
Academic years 2024-2028



April 2024

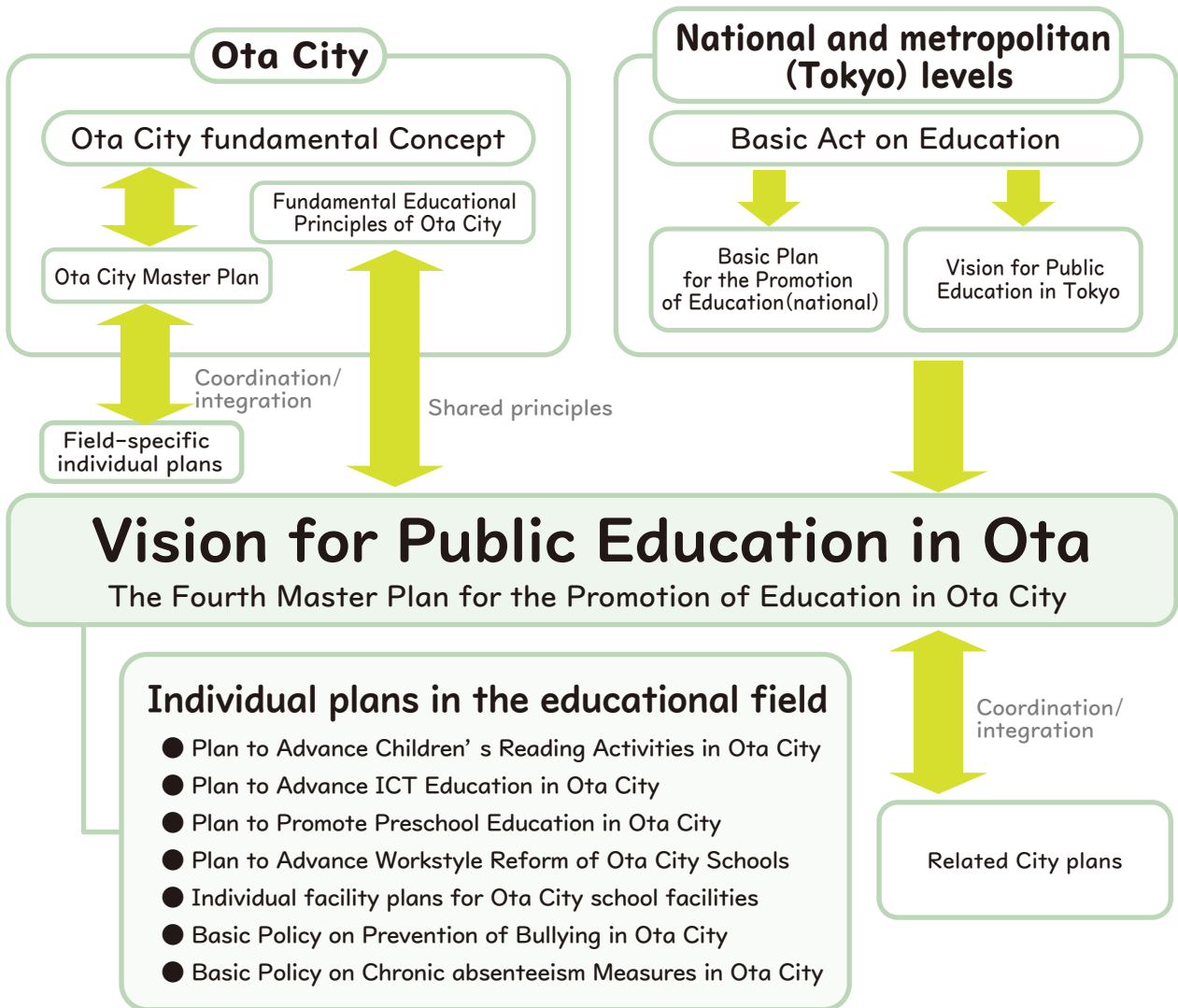
Ota City board of education



1

Positioning of the Plan

- The Fourth Basic Plan for the Promotion of Education in Ota City (“the Plan”) is Ota City’s Master plan for the educational field. Its purpose is to achieve the City’s future vision for the Ota City fundamental Concept.
- The Plan corresponds to a “basic plan for the promotion of education” as specified in Article 17, Paragraph 2 of the Basic Act on Education. It is also positioned as a field-specific individual plan that is a component of the Ota City Basic Plan.
- The Plan is consistent with and integrated with other, related City plans.



2

Plan Period

- The plan period is the five-year period covering the academic years 2024 to 2028.
- In the event of significant changes in the socioeconomic environment affecting education, Ota City will review these plans as necessary to ensure that they are still practicable.





1

Ota City's vision for children's education

Ota City's vision for children's education, in accordance with the Basic Act on Education, is as follows.

Vision for the Children of Ota City

- Children who have a desire to learn, think for themselves and act on their own initiative
- Children who respect diversity and cherish themselves and others
- Children who strive to contribute as members of society in connection with their communities
- Children who expand their capabilities and work together to shape the future

2

Plan Principles

The Vision for Public Education in Ota establishes a detailed target image of the children Ota City aims to produce through education, in view of the social milieu in which education occurs and efforts undertaken until now. The principles that guide this vision are as follows.

Principles

We foster the ability to create a future that is full of smiles and warmth.

- Our children will grow up in a future of currently unforeseeable social changes. Our hope is to cultivate in children the ability to shape the future they will live in, so they can lead the creation of a society of smiles and warmth even in circumstances we cannot predict.

3

Basic Policies Regarding the Plan

To achieve the principles outlined above, Ota City has formulated three Basic Policies.

Basic Policy 1 focuses on children; Basic Policy 2, on schools and teachers; and Basic Policy 3, on families and communities.

Basic Policy 1

We cultivate global citizens who can create a sustainable society.

Basic Policy 2

We elicit the full potential of each child, leaving nobody behind.

Basic Policy 3

All Ota City residents do their part to raise children who can lead the future, learning and growing with them.



Principles

We foster the ability to create a future that is full of smiles and warmth.

Basic Policies

Basic Policy 1

We cultivate global citizens who can create a sustainable society.

Basic Policy 2

We elicit the full potential of each child, leaving nobody behind.

Basic Policy 3

All Ota City residents do their part to raise children who can lead the future, learning and growing with them.

Individual Goals

Individual Goal 1

We foster the ability to live creatively in an unpredictable future society.

Individual Goal 2

We cultivate people who can lead Global City Ota connected to the world.

Individual Goal 3

We cultivate the fundamental strength to leverage the uniqueness and capabilities of each individual.

Individual Goal 4

We increase the strengths of schools and teachers.

Individual Goal 5

We support education which teaches how to live a fulfilling life true to oneself.

Individual Goal 6

We create flexible, creative study spaces and safe, secure learning environments.

Individual Goal 7

We create schools that stand at the heart of the regional community through partnership and collaboration among schools, families and communities.

Individual Goal 8

We build an environment for continuous, lifelong learning.



Policies

- (1) We cultivate the ability to solve problems and the power to create value.**
- (2) We cultivate the ability to think and act independently while working with others.**
- (3) We develop the ability to effectively utilize information.**

- (1) We improve English proficiency and build communication skills.**
- (2) We cultivate an attitude of respecting local traditions and culture while understanding different cultures and their values.**
- (3) We foster a commitment to forming a sustainable society.**

- (1) We cultivate richness of spirit.**
- (2) We cultivate assured academic capability that leaves nobody behind.**
- (3) We promote physical health.**
- (4) We provide a full complement of educational opportunities from early childhood to junior high school.**

- (1) We improve teachers' teaching abilities, to construct new teaching models and pursue learning at a deeper level.**
- (2) We improve schools' organizational management capabilities.**
- (3) We boost the appeal of teaching as a profession, through measures such as reforming work styles of schools.**

- (1) We provide comprehensive special support education.**
- (2) We provide thorough support for measures against bullying and chronic absenteeism.**
- (3) We provide comprehensive consultation and support facilities.**

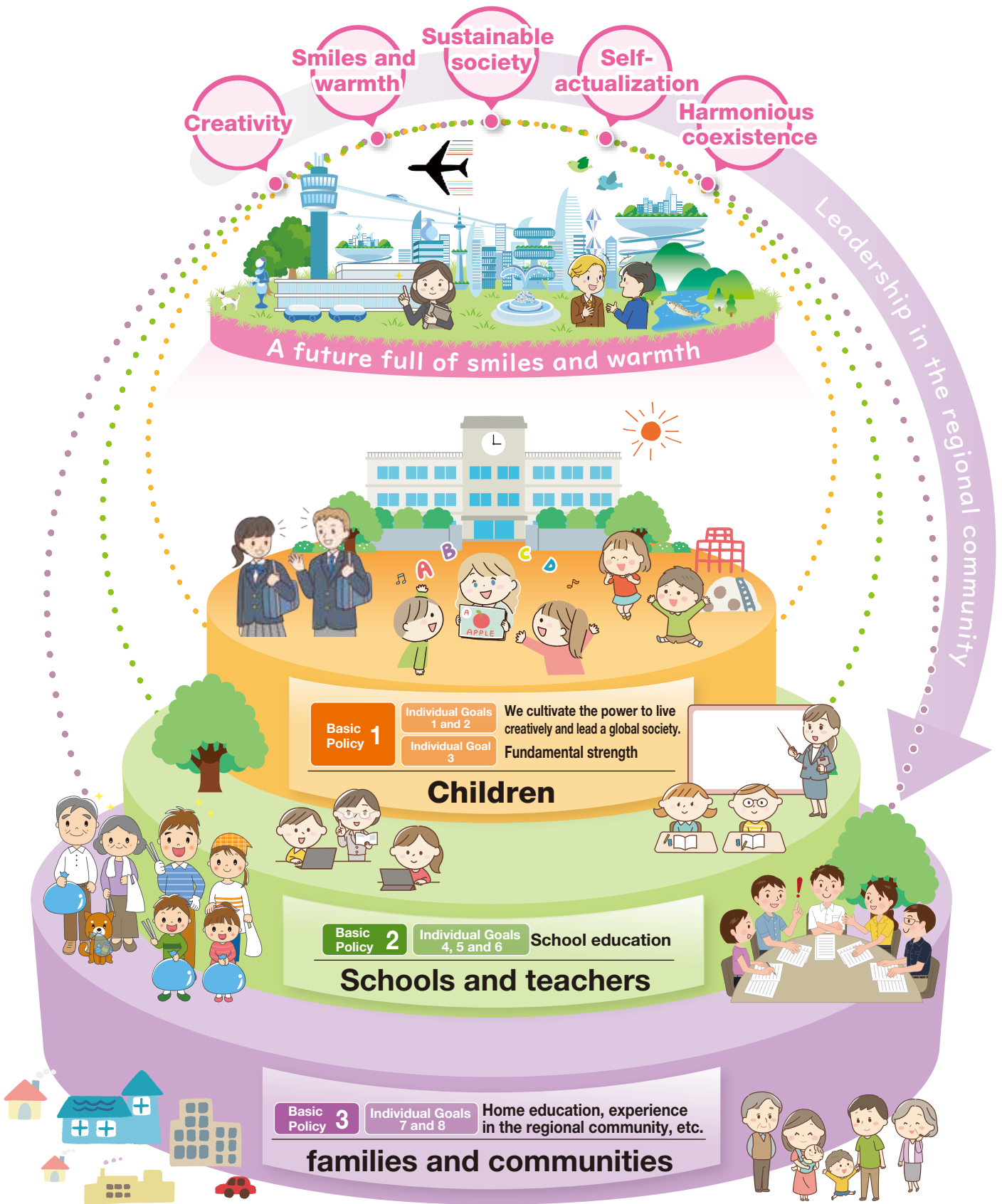
- (1) We provide attractive school facilities.**
- (2) We provide a comprehensive educational environment to elicit students' full potential.**
- (3) We ensure safety and security.**

- (1) We promote community schools.**
- (2) We create safe and secure environments in partnership with the region.**
- (3) We support education at home.**

- (1) We provide comprehensive library facilities.**
- (2) We offer a wide range of educational opportunities.**
- (3) We protect cultural properties.**



Schematic view of organization



Families and communities, schools and teachers support children’s growth, fostering the strengths that will become their foundations in life. Building on these foundations, we will cultivate the ability of children to live creatively and lead a global society.

As the architects of a future society, today’s children will build a future full of smiles a smiles and warmth, achieving a sustainable, creative and harmonious society. They will support the region as leaders of the regional community.

Cultivation of Creative Talents and Skills

Ota City supports science, technology, engineering, arts and mathematics (STEAM) education, an approach of interdisciplinary courses and other study that seeks out and solves problems in real society. The STEAM approach cultivates skills in problem resolution and value creation.

Shaping the Future of Ota

Starting in the 2025 academic year, all elementary schools in Ota City will teach “Shaping the Future of Ota,” a course unique to the City, in the fifth and sixth grades.

The course will cultivate the creative talents and skills students need to play leading roles in society as members of an international and regional society. These include tackling the challenge of creating value (monozukuri) and creating solutions for the regional community (“regional formation”).

“Shaping the Future of Ota” will effectively utilize the diverse and unique characteristics of the Ota region, in partnership with companies and others that boast leading-edge technologies and people active in the community. The course’s program of study will create and publicize products and initiatives that lead to the well-being of people and the regional community.



STEAM and Other Interdisciplinary Studies in Junior High School

Junior high school students will build on the insights they gained in elementary school in “Shaping the Future of Ota.” Focusing on periods of comprehensive study, Ota City schools will advance interdisciplinary learning, including STEAM education, to cultivate students’ creative talents and skills.

Advancing International Education

Global City Ota connected to the world. To nurture the people needed to lead that international City, Ota City schools will teach practical communication proficiency in English and encourage a rich international mindset.

Ota Global Communication (OGC)

Ota City will designate “international education advancement schools,” and will implement Ota Global Communication (OGC) with a focus on English classes and activities and subjects in foreign languages. This educational program, unique to Ota City, will serve to advance the City’s status as an international City.

In addition to practical communication skills in English, this program will teach students virtues such as initiative and assertiveness. Children will also participate in online exchange with foreign schools and overseas trips, to instill a rich international mindset and deepen their understanding of other cultures.

The results of research and practical application at international education advancement schools, along with classes that simulate overseas environments using digital technology, will be deployed in other elementary and junior high schools. The result will be a comprehensive and well-rounded program of English study.





Individual Goals

Individual Goal 1

We foster the ability to live creatively in an unpredictable future society.

- We cultivate the ambition to assess a variety of social issues as one's own, think independently and cooperate with others to solve problems. We also develop the creativity, problem-solving skills and ability to apply information that are vital for navigating an unpredictable future society.

★=Important project ●=Main project

Policy(1) : We cultivate the ability to solve problems and the power to create value.

Measure① Interdisciplinary study of disciplines such as STEAM education

- ★ “Shaping the Future of Ota,” a course unique to the City
- ★ Interdisciplinary learning, including STEAM education, at junior high schools
- Monozukuri Education and Study Forum

Measure② Science education

- Base schools for the advancement of natural-science education
- Children's science classrooms ● Ota Science Festival



A class at an Ota Science School (Shimizukubo elementary School)

Policy(2) : We cultivate the ability to think and act independently while working with others.

Measure① Career education

- Workplace experience
- Career education using external human resources

Measure② Experiential activities

- Field trips
- Joint events with elementary and junior high schools

Measure③ Forming a habit of self-evaluation

- Cultivating skills in literary expression and logical thinking ability



Workplace experience

Policy(3) : We develop the ability to effectively utilize information.

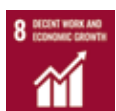
Measure① ICT education

- ★ Developing skills in applying information through classes taught using tablets, etc.
- Information ethics education



Use of tablets in schoolwork

Related SDGs targets



Individual Goal 2

We cultivate people who can lead Global City Ota connected to the world.

- Ota City aims to achieve tangible improvements in students' practical communication skills in English, bring children into contact with the traditions and culture of Japan and their regional community and instill a spirit of respect for those things, and nurture consensus-forming and cooperation with other cultures, customs and approaches, based on an attitude of understanding and mutual recognition. We also aim to stimulate an interest in international and regional communities, with commitment toward forming a sustainable society.

★=Important project ●=Main project

Policy(1) : We improve English proficiency and build communication skills.

Measure① International education

★ Ota Global Communication (OGC)

- Enhancement of English classes
- Overseas field trips for junior high school students
- Use of interactive English learning facilities
- English proficiency testing



Overseas field trips for junior high school students

Policy(2) : We cultivate an attitude of respecting local traditions and culture while understanding different cultures and their values.

Measure① Human-rights education

- Study of issues in human rights
- Raising awareness of human rights

Measure② Education to instill love of and pride in one's region

- Interactive learning about the history, traditions, culture, etc. of regional communities
- Participation in regional events



Traditional culture lessons

Policy(3) : We foster a commitment to forming a sustainable society.

Measure① Formation of a sustainable society

- Education for sustainable development (ESD)
- Volunteer activities
- UNESCO schools



Volunteer activities

Related SDGs targets





Individual Goals

Individual Goal 3

We cultivate the fundamental strength to leverage the uniqueness and capabilities of each individual.

- We cultivate richness of spirit, assured academic abilities and sound physical health, to provide students with the foundational abilities with which to live rich and fulfilling lives. Moreover, we strive to offer a full complement of educational opportunities from early childhood to junior high school.

★=Important project ●=Main project

Policy(1) : We cultivate richness of spirit.

Measure① Moral education

- Classes on moral education open to the public
- Education to prevent bullying

Measure② Education about life

- Education to prevent suicide

Measure③ Reading activities

- ★ Advancement of reading activities in schools

Measure④ Artistic experiences

- Musical appreciation classes



Morning readings

Policy(2) : We cultivate assured academic capability that leaves nobody behind.

Measure① Guidance based on academic proficiency level

- Academic counseling
- Guidance in small groups based on proficiency level

Measure② Personalized study support and cultivation of effective study habits

- ★ Support for independent study in Hokago ("after class dismissal") Children's classroom

Measure③ Implementation of various proficiency tests

- Kanji Aptitude Test (Kanji Kentei)
- EIKEN (reiterated)



Academic counseling

Policy(3) : We promote physical health.

Measure① Improving physical strength

- ★ Establishment of enjoyable exercise habits

- Improvement of physical education classes based on an analysis of results of surveys on physical strength

Measure② Fostering health

- Comprehensive health education
- One month of practicing "early to bed, early to rise, and don't forget your breakfast"
- Research and practice in food education in partnership with TOHO UNIVERSITY



A physical education class

Policy(4) : We provide a full complement of educational opportunities from early childhood to junior high school.

Measure① Early childhood education (ECE)

- Provision of training for childcare and preschool workers

Measure② Coordination between ECE and elementary schools

- Promotion of coordination between ECE and elementary schools

Measure③ Integration of elementary and junior high school education

- Guidance from a unified perspective on elementary and junior high school education

Related SDGs targets



Individual Goal 4

We increase the strengths of schools and teachers.

- Ota City will construct new teaching models leading to improved academic performance in students. To improve teachers' performance, training and other measures will be provided, to ensure that teachers have the necessary talents and skills. To achieve high-quality education, Ota City will improve schools' organizational management. Also, to ensure that teachers have sufficient time with students, Ota City will advance the creation of attractive work environments for teachers, including workstyle reform.

★=Important project ●=Main project

Policy(1) : We improve teachers' teaching abilities, to construct new teaching models and pursue learning at a deeper level.

Measure① Construction of new teaching models and enhancing classroom education

- ★ Construction of new teaching models using evidence-based policy making (EBPM)
- ★ Advancement of subject-based teacher assignment in elementary schools (a system in which different teachers present different subjects)
- Enhanced guidance using ICT



School-based research

Measure② Improving teachers' teaching abilities

- Systematic improvement of teaching based on internal school research
- Enhancement of training to improve teaching ability

Policy(2) : We improve schools' organizational management capabilities.

Measure① Revitalization of school organizations

- Advancement of "team schools" through the leadership of principals
- Dissemination of school information
- Programs to stimulate children's zest for life
- Formation of networks of school-based organizations and related organizations on measures to prevent suicide



Program to stimulate children's zest for life

Policy(3) : We boost the appeal of teaching as a profession, through measures such as reforming work styles of schools.

Measure① Securing sufficient time with students by reducing burdens on teachers

- ★ Placement of administrative staff to support schools
- ★ Regional coordination and transfer of school club activities
- City-specific hiring of teachers
- Raising efficiency of administration using ICT



Test implementation of regional club activities (dancing)

Related SDGs targets





Individual Goals

Individual Goal 5

We support education which teaches how to live a fulfilling life true to oneself.

- The difficulties students face are growing increasingly diverse and complex. Against this background, Ota City will tailor educational environments to the situation of each student with difficulties and will enhance counseling facilities. In this way, Ota City will support learning in which all students can live fulfilling lives and be true to themselves.

★=Important project ●=Main project

Policy(1) : We provide comprehensive special support education.

Measure① Diversity in learning environments

- ★ Special support classes for students with autism and emotional impairments
- Special support classes for students with cognitive impairments
- Classes with guidance for receiving special-needs support while attending a regular school
- Special support classes (support rooms)

Measure② Guidance for special support education

- Research on special support education

Measure③ Support programs in schools

- Special support staff in schools

Measure④ Seamlessly integrated support

- Counseling on school entry
- Support for students who require medical care

Measure⑤ Education toward a inclusive society

- Exchange between special support classes and ordinary classes

Policy(2) : We provide thorough support for measures against bullying and chronic absenteeism.

Measure① Assessment of the status of students

- Class group surveys

Measure② Prevention of bullying and early discovery and response

- ★ Prevention of bullying and early discovery and response
- Liaison with police

Measure③ Creation of comfortable spaces for chronic absenteeism students

- ★ Establishment of schools with diverse learning styles
- Creation of comfortable spaces in schools

Measure④ Support for chronic absenteeism students

- Attendance support personnel



Diversified Learning School
Mirai Gakuen Junior High School

Policy(3) : We provide comprehensive consultation and support facilities.

Measure① Educational counseling

- ★ Support from school social workers
- ★ Creation of counseling facilities using ICT

Measure② Support for parents of children with developmental disabilities

- Parent training

Measure③ Education for foreign nationals, etc.

- Japanese guidance

Measure④ Support for students with various concerns

- Support for students with various concerns



A Japanese language lesson

Related SDGs targets



Individual Goal 6

We create flexible, creative study spaces and safe, secure learning environments.

- Ota City aims to improve school facilities. The City will take an integrated approach to overhauling infrastructure, enhancing the educational environment in response to changing times while addressing the problem of aging structures. We will also strengthen disaster-preparedness facilities and reduce environmental impact. While improving ICT and other aspects of the learning environment, we will advance education to reinforce the safety and security of students.

★=Important project ●=Main project

Policy(1) : We provide attractive school facilities.

Measure① Overhaul of aging school facilities

★ Rebuilding school facilities

Measure② Enhancing school facilities

- Overhaul of school facilities that serve as bases for the regional community
- Consideration of communal use of school pools

Measure③ Creating eco-conscious schools

- Advancement of reduction of environmental impact



New school building, Omori Dainana Junior High School

Policy(2) : We provide a comprehensive educational environment to elicit students' full potential.

Measure① School facility environments

★ Facility environments that respond to the study needs of a new era

Measure② ICT environment

- Enhancement of the ICT environment

Measure③ Reading environment

- Enhancement of school libraries



Integrated use of ordinary classrooms and corridors

Policy(3) : We ensure safety and security.

Measure① Safety and security in schools

- Reinforcement of crime prevention systems in schools
- Response to food allergies with respect to school meals

Measure② Safety education for students

- Crime prevention education
- Traffic safety travelling guidance



Walking training

Related SDGs targets





Individual Goals

Individual Goal 7

We create schools that stand at the heart of the regional community through partnership and collaboration among schools, families and communities.

- Ota City will advance community schools, creating schools that serve as the hearts of local communities and building schools that leverage the unique characteristics of the region. We will foster collaborating and cooperating among schools, families and communities, so that the region as a whole contributes to the upbringing of children.

★=Important project ●=Main project

Policy(1) : We promote community schools.

Measure① Creating schools that serve as the hearts of their local communities

★ Advancement of community schools that leverage the unique characteristics of the region

- Promotion of community cooperation activities for learning and education
- Opening of school facilities to the public



Careful deliberations at a community school

Policy(2) : We create safe and secure environments in partnership with the region.

Measure① Creation of comfortable spaces for students after classes are dismissed

- Hokago (“after class dismissal”) Plaza

Measure② Safety going to and from school

- Enhancement of protective activities
- Joint inspection of school routes



Hokago (“after class dismissal”) Children’s Classroom

Policy(3) : We support education at home.

Measure① Improvement of the educational capabilities of families and communities

- Support program to improve the educational capabilities of families and communities
- Study groups of education at home
- Formation of support systems for education at home



Home education study group (School debut support program)

Related SDGs targets



Individual Goal 8

We build an environment for continuous, lifelong learning.

- Ota City encourages lifelong learning, to enrich residents' lives and renew their sense of purpose in the 100-year life era. To this end, the City will provide libraries that leverage the characteristics of the region and provide learning opportunities that satisfy a wide range of needs. We will furnish an environment in which everyone can continue to learn throughout their lives.

★=Important project ●=Main project

Policy(1) : We provide comprehensive library facilities.

Measure① Creation of a Central Library

- Deliberations on the basic concept for a Central Library

Measure② Enhancement of libraries

★ Enhancement of library services

- Creation of libraries that leverage the characteristics of the region



Ikegami Library

Policy(2) : We offer a wide range of educational opportunities.

Measure① Dissemination of information about study opportunities

- Dissemination of information that connects Ota City residents with learning

Measure② Securing educational opportunities

- Evening classes

Ota City Lifelong Learning Website
Ota Manabi No Mori



Policy(3) : We protect cultural properties.

Measure① Raising awareness about protecting cultural properties

- Raising awareness about protecting cultural properties



Mizudome-no-Mai dance, Gonshoji Temple A Tokyo
Metropolitan Designated Intangible Folk Cultural Property

Related SDGs targets





Vision for Public Education in Ota Plan Overview

April 2024

Published by : Ota City board of education

5th floor, Nissay Aroma Square, 5-37-1

Kamata, Ota-ku, Tokyo 144-8623

Tel: (+81) (0)3-5744-1423 FAX: (0)3-5744-1535

Official website: <https://www.city.ota.tokyo.jp/kyouiku/>